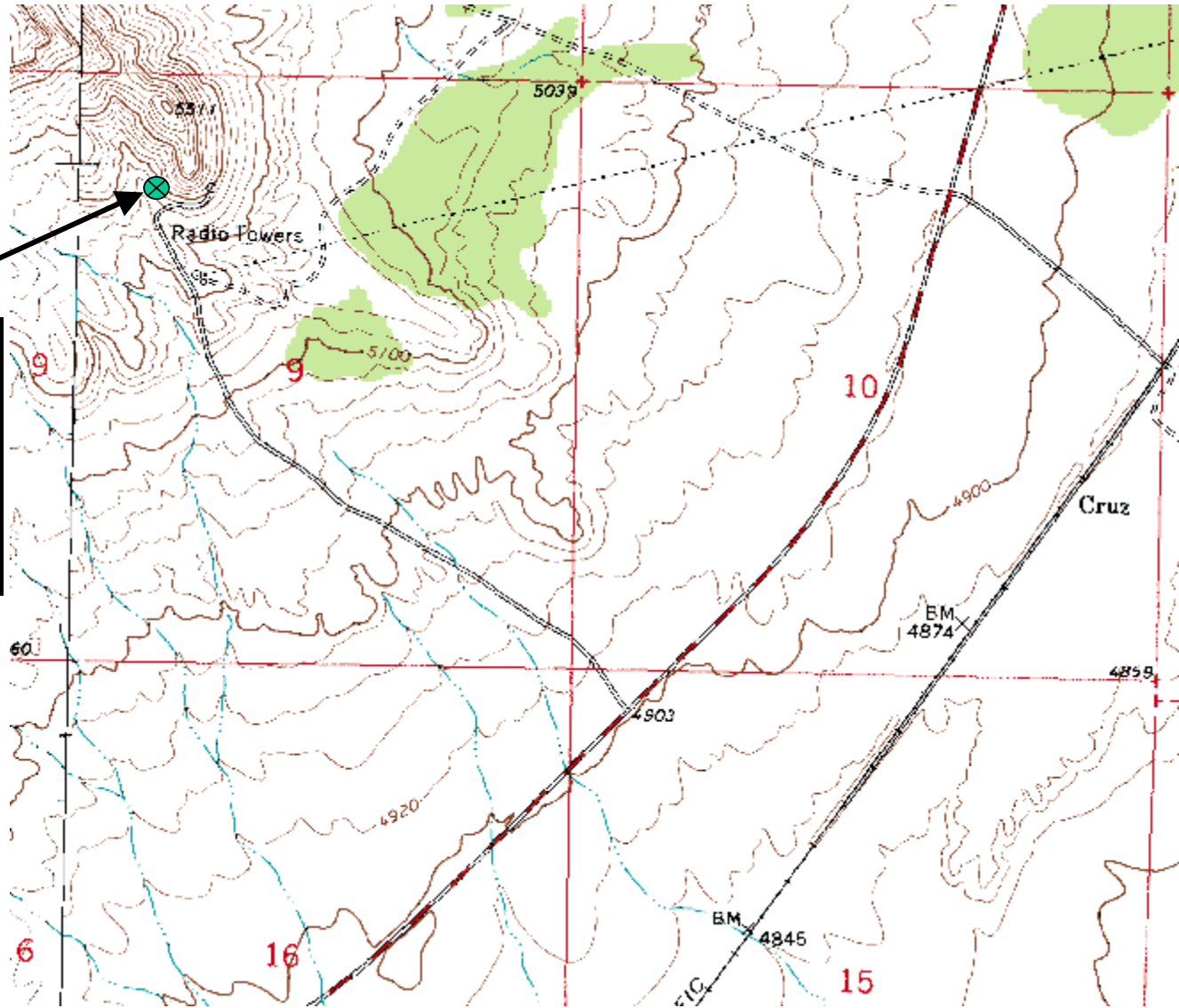
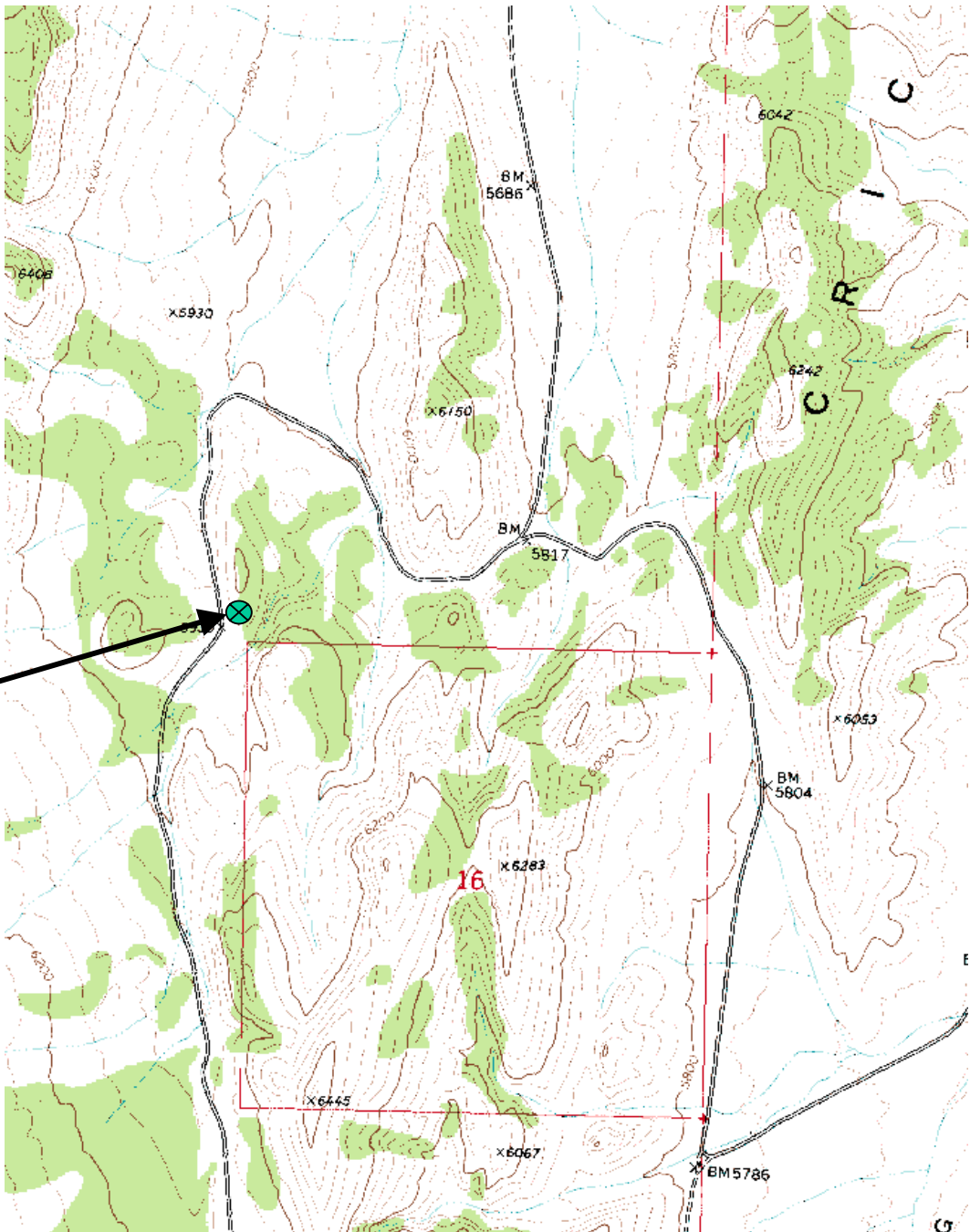


UT67
T24S, R8W
Section 3 SW ¼
Black point 7.5 min quad

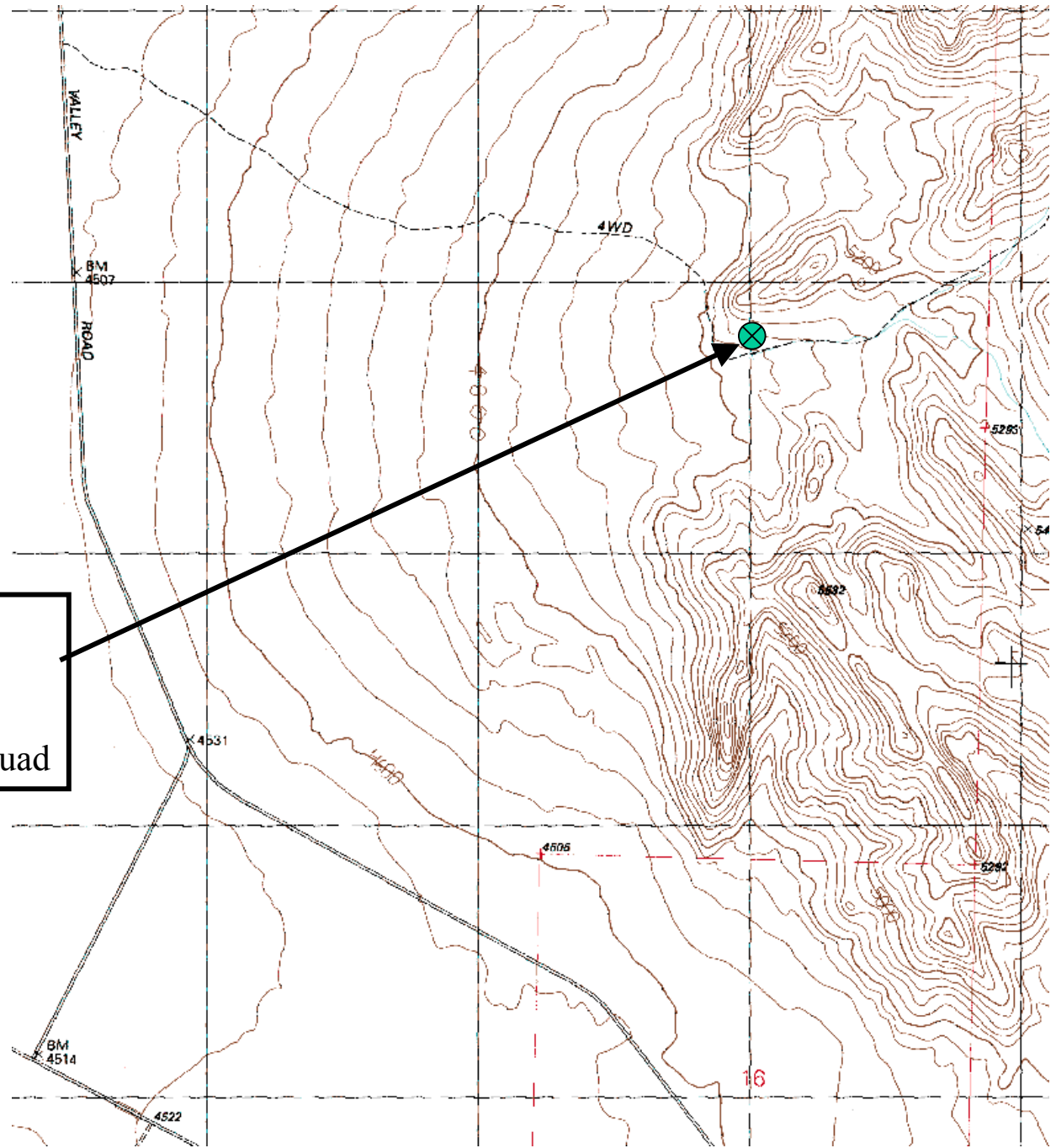
UT68
T23S, R9W
Section 9 NW ¼
Cruz 7.5 min quad



UT69
T22S R10W
Section 8 SE ¼
Candland Spring 7.5 min quad



UT71
T20S R14W
Section 4 SE1/4
Hell N Moriah Canyon 7.5 min quad



UT72
T19S R15W
Section 20 NE1/4
Dowdell Canyon 7.5 min quad

